



# INSTRUCTION BULLETIN

No. 340713  
Machine: T7  
Published: 08-2018  
Rev. 01

**NOTE: DO NOT DISCARD the Parts List from the Instruction Bulletin. Place the Parts List in the appropriate place in the machine manual for future reference. Retaining the Parts List will make it easier to reorder individual parts and will save the cost of ordering an entire kit.**

*NOTE: Numbers in parenthesis ( ) are reference numbers for parts listed in Bill of Materials.*

Installation instructions for **kit number 9000581**

## SYNOPSIS / PROBLEM:

This kit contains the parts needed to install a flashing light kit onto the T7 model sweeper.  
Please follow step-by-step instructions.

## SPECIAL TOOLS / CONSIDERATIONS: NONE

(Estimated time to complete: 1 hour)

## PREPARATION:

1. Park the machine on a clean level surface.
2. Turn off the machine and remove the key.

**FOR SAFETY: Before leaving or servicing machine, stop on level surface and turn off machine.**

3. Disconnect the battery cables from the machine.



**WARNING: Always disconnect battery cables from machine before working on electrical components.**

## INSTALLATION:

*NOTE: Refer to Fig. 1 to complete most steps in this Instruction Bulletin, unless otherwise noted.*

1. Center and hold the light bracket (5) over the top of the recovery tank cover so there is approximately a 1/8" gap between the bottom of the light bracket (5) and the top of the recovery tank cover.
2. Drill four 5/16" holes through the holes in the light bracket (5) and into the recovery tank cover. Refer to Fig. 3.
3. Remove the light bracket (5) from the recovery tank cover and widen the 5/16" holes with a 1/2" bit.

4. Install the rocker switch (10) into the light bracket (5).
5. Route the wires from the lamp of (1) through the base of (1) and through the hole in top of the light bracket (5).
6. Use two hex nuts (4) and two flat washers (3) to install the light assembly (1) onto the light bracket (5).
7. Loop the tie wrap (11) into the light bracket (5), route the wires from the light assembly (1) down through the tie wrap (1), and tighten the tie wrap (11) to secure the wires to the light bracket (5).
8. Use four hex screws (7), four lock washers (9), four flat washers (8), and four isolator nuts (6) to attach the light bracket (5) to the recovery tank cover.
9. Connect the loose wires from the light assembly to the tank harness. Refer to Fig. 2.
10. Connect wires labeled P2 and P3 on the tank harness to the rocker switch (10). Refer to wire labels, markings on the rocker switch, and Fig. 2 for wiring information.
11. Reconnect the battery cables to the machine.
12. Test the flashing light assembly.

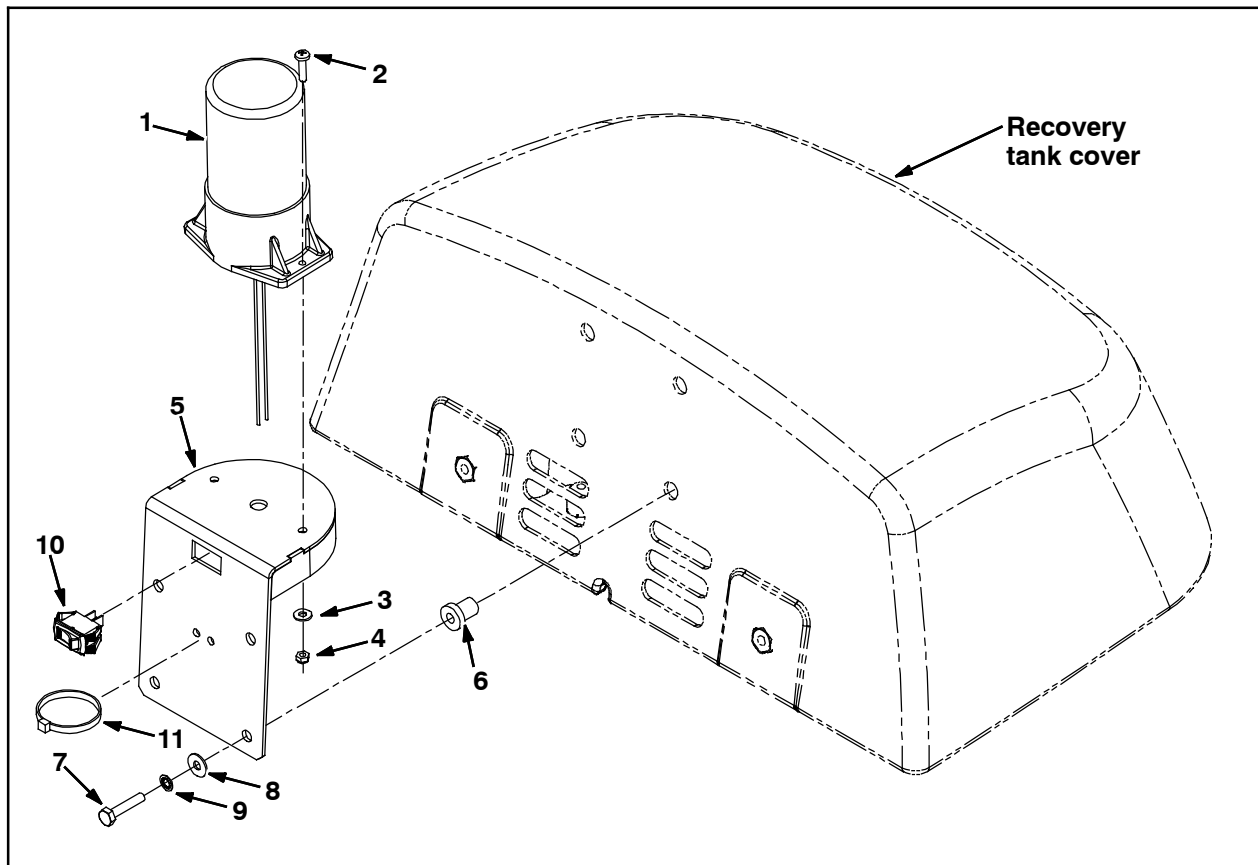


FIG. 1

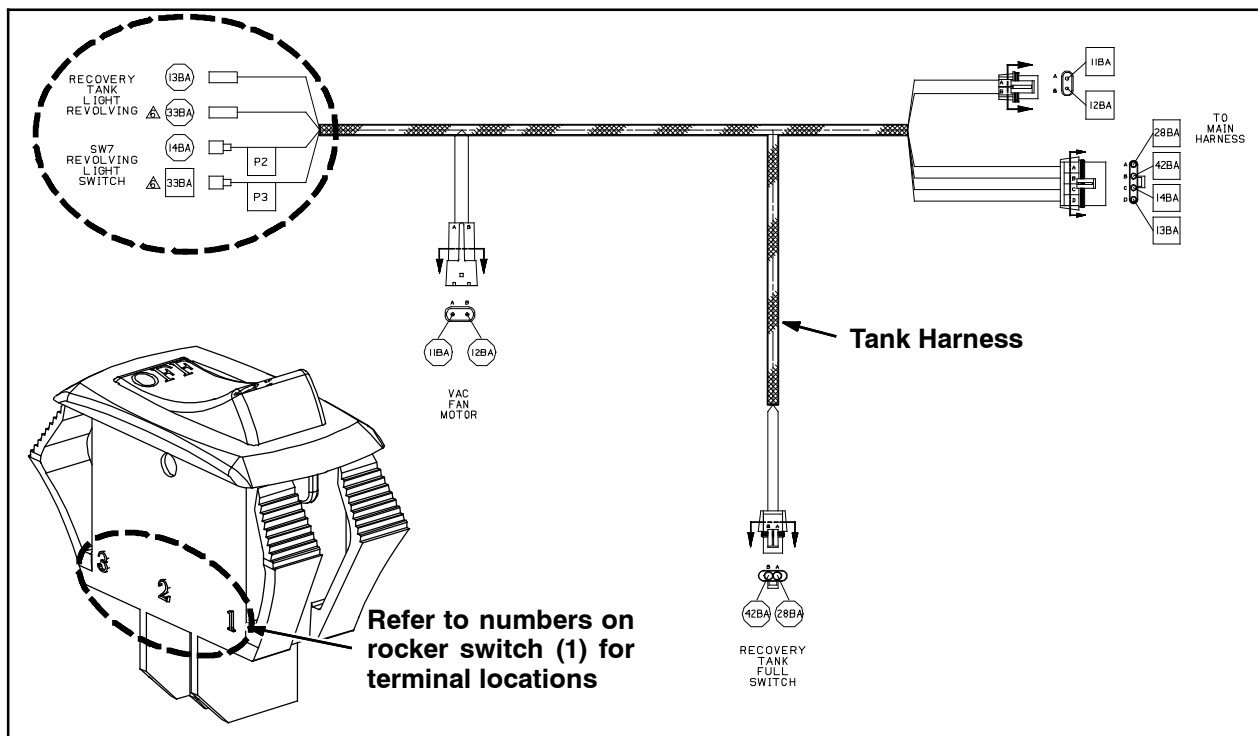
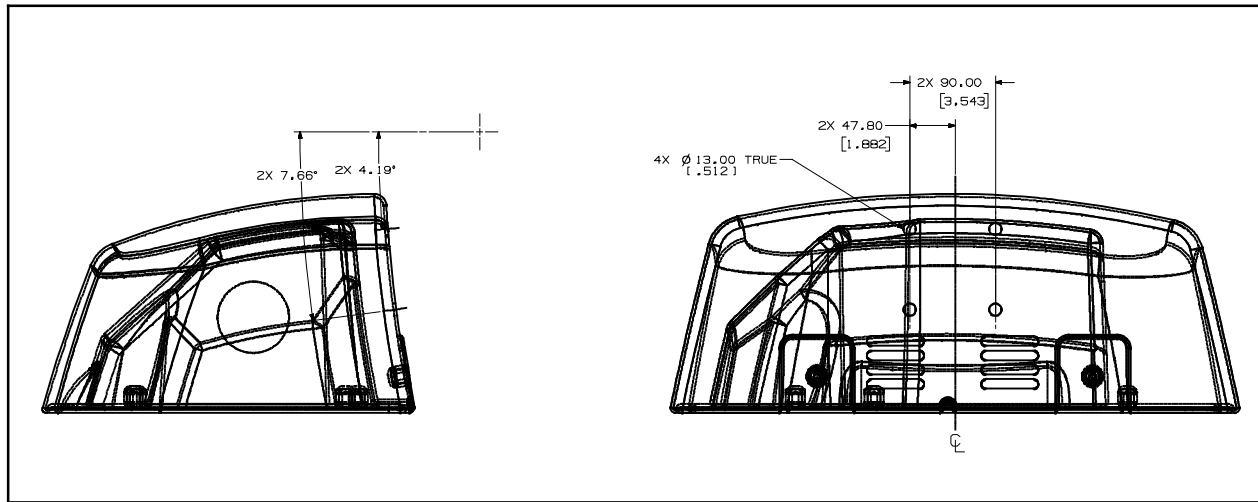


FIG. 2



**FIG. 3**

**Bill of Materials for Light Kit, Flash, CI [T7/SSR]- (9000581)**

Ref.	Tennant Part No.	Description	Qty.
▽	9000581	Light Kit, Flsh, CI [T7/SSR]	1
▲ 1	1014564	Lamp, Strobe, 12- 80Vdc, 4Watt	1
▲ 2	24196	Screw, Pan, M5 X 0.8 X 20, SS	2
▲ 3	01683	Washer, Flat, #10 SS	2
▲ 4	09739	Nut, Hex, Lock, M5 X 0.8, NI, SS	2
▲ 5	1014527	Bracket Wldt, Light, Flsh	1
▲ 6	61913	Nut, Isolator, .25- 20 Wall Thk .031- .187	4
▲ 7	01699	Screw, Hex, .25- 20 X 1.25, SS	4
▲ 8	01684	Washer, Flat, 0.25 SS	4
▲ 9	07515	Washer, Lock, Int, .25, SS	4
▲ 10	130717	Switch, Rocker, 250VAC 15A Spst On/Off	1
▲ 11	130040	Tie, Cable, Nyl, 06.0L .12W	1

TENNANT COMPANY  
P. O. Box 1452  
Minneapolis, MN 55440-1452